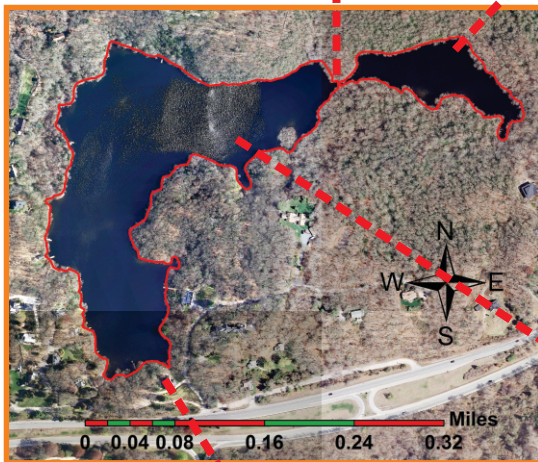




The spillway dam of Wash Pond provides a hydraulic control of pond level. However, the pond depth just east of the dam is shallow. The natural pond base here and the low gradient drop to the Hale House ram pump location provide evidence that this low structure is designed only to help maintain pond level during dry times.



Little Wash Pond: 3.8 acres when full; During dry times the water drops some 8 to 10 ft; During very wet times this pond level rises over the Wash Pond dam and equalizes with Wash Pond. This glacial kettle pond has no outlet.



The Hale House used Wash Pond as its water supply long before well drilling equipment was invented. A ram pump was used to force Wash Pond water some 43+ feet upward into a cistern on the third floor.



The cistern on the third floor of Hale House extended upward from 3rd floor level (106.09 ft msl) for at least four ft to 110 ft msl. Thus, the full cistern water level was about 43 feet above the Wash Pond spillway elevation.



Wash Pond: 21.0 acres; Depth: > 24 ft.; Elevation: 67 ft above mean sea level; Spillway low pond level is 0.54 ft higher than the former garage situated behind the new Annex (66.46 ft msl).